

SMART HJC 50B

2nd GEN PREMIUM MOTORCYCLE BLUETOOTH®
COMMUNICATION SYSTEM FOR HJC HELMETS

HD SPEAKERS

Downloadable Software

Download the **SMART HJC BT App** on [Google Play Store](#) or [App Store](#).



SMART HJC BT

- Device Configuration Setting

Download the following items at www.smarthjc.com



SMART HJC Device Manager

- Firmware upgrade
- Device configuration setting

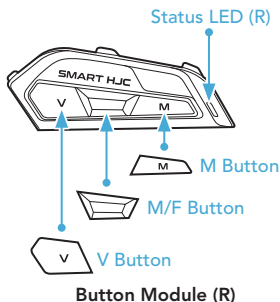
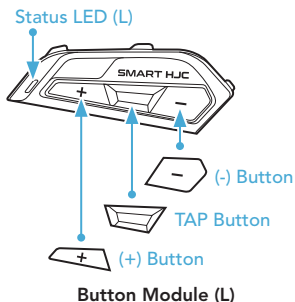
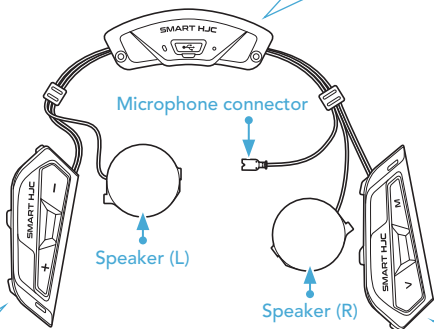
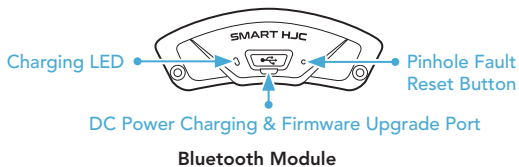


Quick Start Guide, User's Guide



HJC Corporation
www.smarthjc.com

Product Details



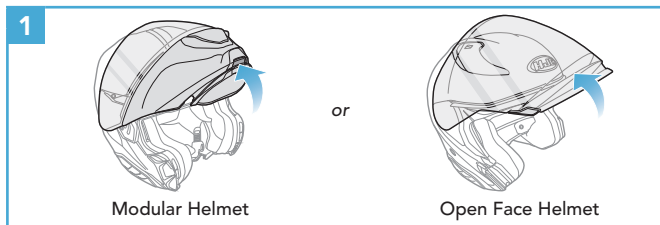
* Status LED (L) and Status LED (R) operate simultaneously.

Installation

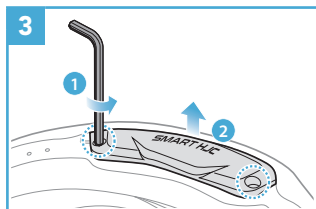
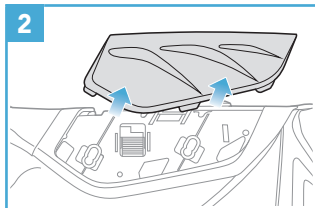
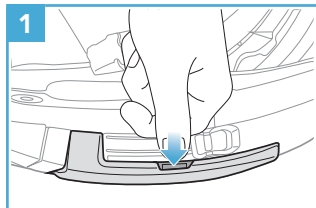
SMART HJC 50B compatible HJC helmets can be found at www.smarthjc.com

- For more information about installation, refer to the User's Guide.

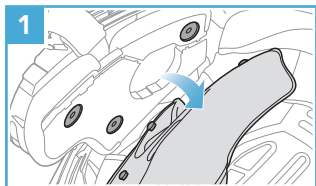
1. Modular Chin Bar / Open & Full Face Visor Opening



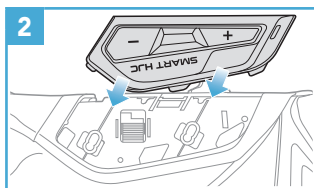
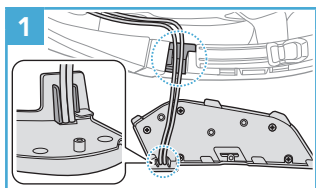
2. Helmet Module Cover Removing



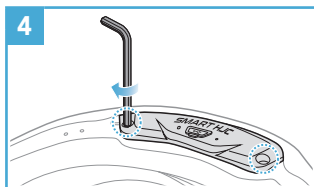
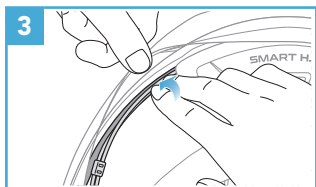
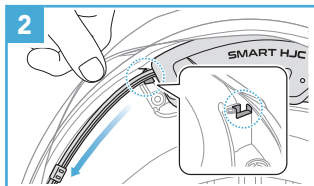
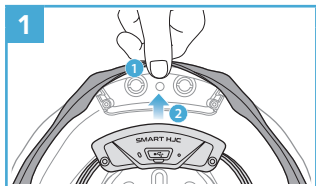
3. Helmet's Cheek Pad Take Off



4. Button Module Installation

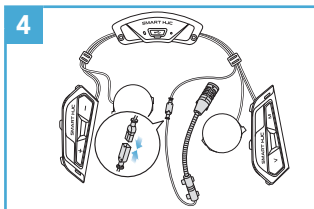
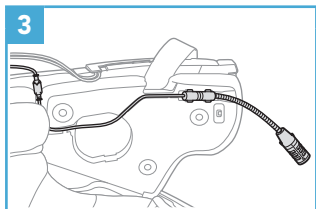
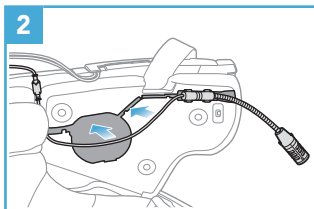
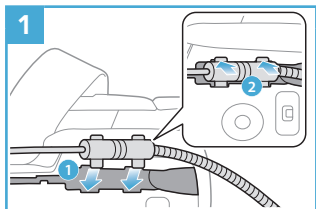


5. Bluetooth Module Installation

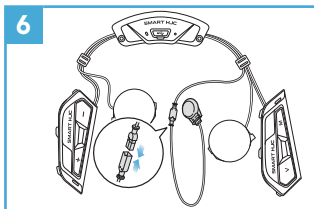
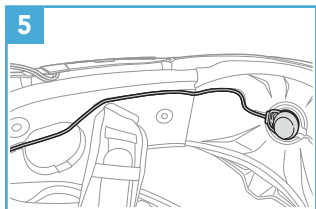
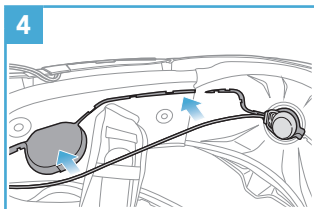
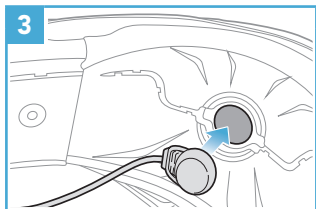
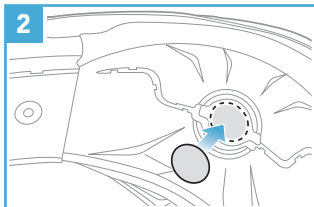
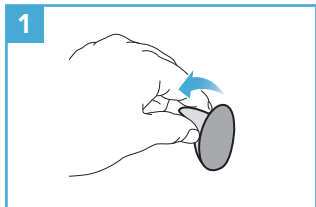


6. Microphone Installation

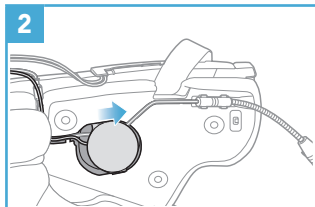
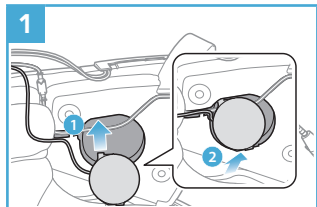
6.1 Modular or Open Face Microphone Installation



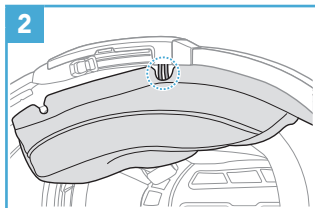
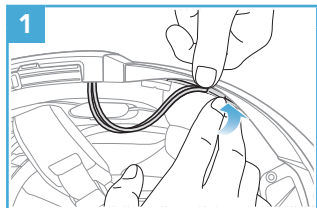
6.2 Full Face Microphone Installation



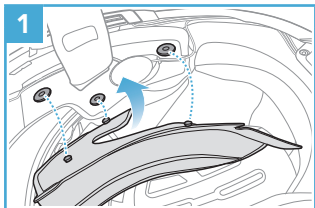
7. Speaker Module Installation



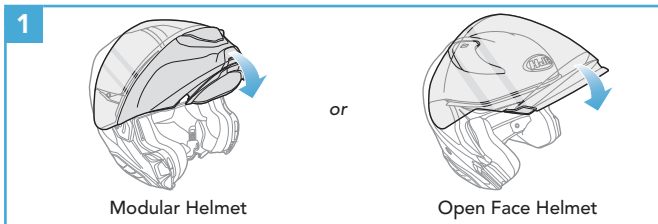
8. Wire Arrangement




9. Cheek Pad Fasten Up



10. Modular Chin Bar / Open & Full Face Visor Closing



Icon Legend

 Tap button the specified number of times

 Press and Hold button for the specified amount of time

 "Hello" Audible prompt

Basic Operations

Powering On



Powering Off



Volume Up



Volume Down



Checking the Battery Level

Powering On



Phone Pairing



- ③ Select **SMART HJC 50B** in the list of Bluetooth devices detected.



- The headset will enter the **Phone Pairing mode** automatically when you **initially turn on** the headset.
- For more information on phone pairing, refer to the User's Guide.

Using the Phone

Answer a Call



End a Call



Reject a Call



Siri and Google Assistant

Activate the Siri or Google Assistant Installed on Your Phone



"Hey Google"
or "Hey Siri"

or



Music Control

Play/Pause



Track Forward



Track Backward



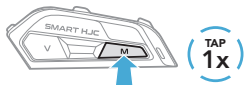
Mesh Intercom™

Open Mesh™: communication within the same channel.

Group Mesh™: communication within the same private group.

- For more information on **Mesh Intercom**, refer to the User's Guide.

Mesh Intercom On

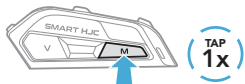


Blinking 



*"Mesh intercom on,
Open Mesh, channel 1"*

Mesh Intercom Off



"Mesh intercom off"

Note: When **Mesh Intercom** is on, the **SMART HJC 50B** will automatically connect to nearby **SMART HJC 50B** users and the headset will be in **Open Mesh (default: channel 1)** initially.

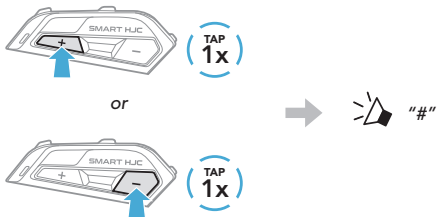
Open Mesh

Channel Setting (Default: channel 1) in Open Mesh

- ① Enter into the **Channel Setting**.



- ② Navigate between channels.
(1 → 2 → ●●● → 8 → 9 → Exit → 1 → ●●●)



- ③ Save the channel.



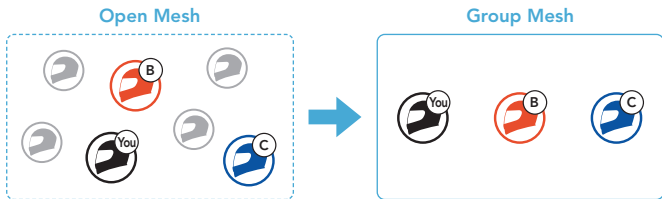
Note: You can use the **SMART HJC BT App** to change the channel.

Group Mesh

Group Mesh is a closed group intercom function that allows users to join, leave, or rejoin a group intercom conversation without pairing each headset.

1) Creating a Group Mesh

Creating a **Group Mesh** requires **two or more Open Mesh users**.



- ① **Users (You, B, and C)** enter into **Mesh Grouping** to create a **Group Mesh**.

Each user simultaneously presses and holds the **M/F Button** for **5 seconds** until **users** hear the voice prompt, **"Mesh grouping."**

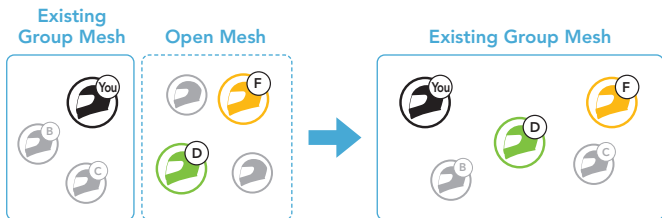


- ② When **Mesh Grouping** is completed, the **users (You, B and C)** will hear a voice prompt on their headsets as **Open Mesh** switches to **Group Mesh**.



2) Joining an Existing Group Mesh

One of the **current users** in an **Existing Group Mesh** can allow **new users (one or more)** in **Open Mesh** to join the **Existing Group Mesh**.



- ① One (**You**) of the **current users** in the **Existing Group Mesh** and **new users (D and F)** in **Open Mesh** enter into **Mesh Grouping** to join the **Existing Group Mesh**.

Each user simultaneously presses and holds the **M/F Button** for **5 seconds** until **users** hear the voice prompt, **"Mesh grouping."**



- ② When **Mesh Grouping** is completed, the **new users (D and F)** will hear a voice prompt on their headsets as **Open Mesh** switches to **Group Mesh**.



■ Enable/Disable Mic (Default: Enable)

Users can enable/disable the microphone when communicating in a **Mesh Intercom**.



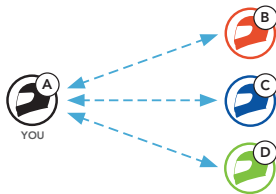
■ Reset Mesh

If the headset in an **Open Mesh** or **Group Mesh** resets the **Mesh**, it will automatically return to **Open Mesh (default: channel 1)**.



■ Bluetooth Intercom

Up to three other people can be paired with the headset for Bluetooth intercom conversations.






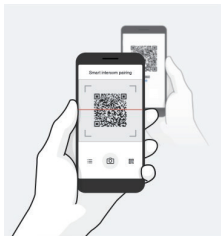
Intercom Pairing


There are two ways to pair the headset.

Using the Smart Intercom Pairing (SIP)

SIP allows you to quickly pair with your friends for intercom communication by scanning the QR code on the **SMART HJC BT App** without remembering the button operation.

- ① Pair the mobile phone with the headset.
- ② Open the **SMART HJC BT App** and tap  (**Smart Intercom Pairing Menu**).
- ③ Scan the **QR code** displayed on your friend (**B**)'s mobile phone.
 - Your friend (**B**) can display the QR code on the mobile phone by tapping  > **QR code** () on the **SMART HJC BT App**.



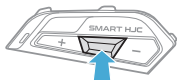
- ④ Tap **Save** and check that your friend (**B**) is paired with **you (A)** correctly.
- ⑤ Tap **Scan** () and repeat steps 3-4 to pair with **Intercom Friends (C)** and **(D)**.

Note: The **Smart Intercom Pairing (SIP)** is not compatible with SMART HJC headsets that use **Bluetooth 3.0 or below**.

Using the Button



- ① **Each user** simultaneously presses and holds the **TAP Button** for **5 seconds** until users hear the voice prompt, **"Intercom Pairing."**



Blinking 



"Intercom pairing"

- ② The **two headsets (A and B)** will be automatically paired.



Turns blue 



YOU

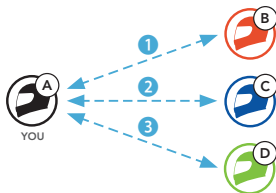


- ③ Repeat the steps above to pair with **other headsets (C and D)**.

Last-Come, First-Served

If the headset has multiple paired headsets for intercom conversations, the last paired headset is set as the **First Intercom Friend**.

Intercom Pairing Order



Last-Come, First-Served



YOU



Intercom
Friend 1



Intercom
Friend 2



Intercom
Friend 3

Two-way Intercom

Start/End Conversation with the First Intercom Friend D



Start/End Conversation with the Second Intercom Friend C



Start/End Conversation with the Third Intercom Friend B



FM Radio

FM Radio On/Off



Start/Stop Scanning



Seek Forward



Seek Backward



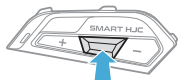
Navigating Preset Stations



Note: You can also save the current station from the **SMART HJC BT App**.

Configuration Menu

Accessing the Configuration Menu

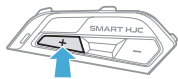


HOLD
10s



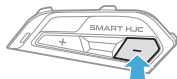
"Configuration menu"

Navigating Between Menu Options



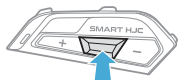
TAP
1x

or



TAP
1x

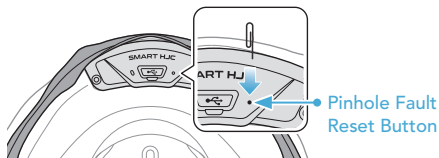
Execute Menu Options



TAP
1x

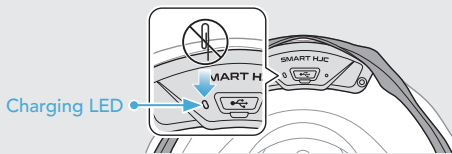
Troubleshooting

Fault Reset

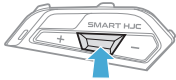


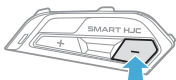






Note:

















- **Fault Reset** will not restore the headset to factory default settings.
- The charging LED is not the **Pinhole Fault Reset Button**. Do not press it.






















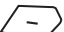











Factory Reset

-  ①  **HOLD 10s** →  "Configuration menu"
-  ②  **TAP 2x** →  "Factory reset"
-  ③  **TAP 1x** →  "Headset reset, good-bye"

Quick Reference

TYPE	OPERATION	BUTTON COMMANDS
 Basic Operations	Power on / Power off	     
	Volume up / Volume down	 or  
 Mobile Phone	Answer phone call	 
	End phone call	 
	Reject phone call	 
 Siri and Google Assistant	Activate the Siri or Google Assistant	 

TYPE	OPERATION	BUTTON COMMANDS
 Mesh Intercom™	Mesh Intercom on/off	 
	Channel setting	 
	Mesh Grouping	 
	Reset Mesh	 
	Enable/Disable Mic	 
 Intercom	Intercom pairing	 
	Start/End intercom	 
 Music	Play/Pause music	 
	Track forward	 
	Track backward	 

TYPE	OPERATION	BUTTON COMMANDS
 FM Radio	FM radio on/off	 
	Select preset	 
	Seek forward/backward	 or  
	Scan up FM band/ stop scanning	