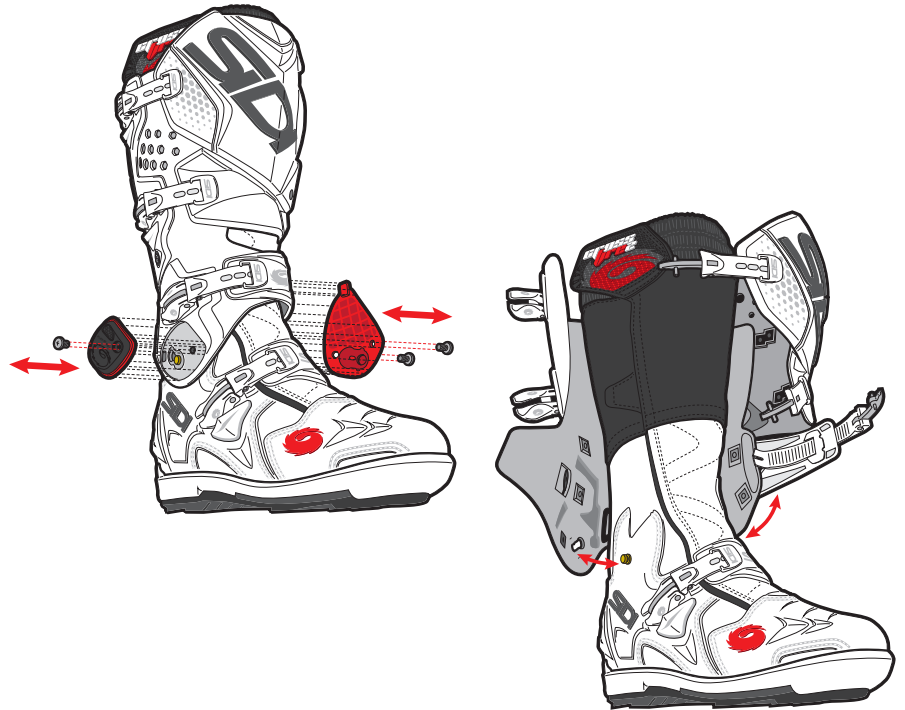
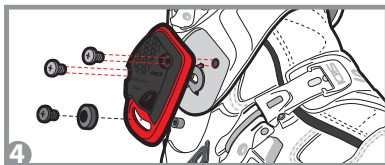
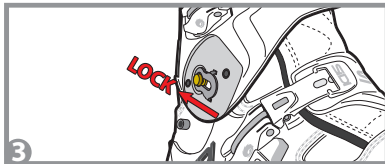
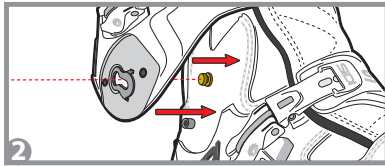
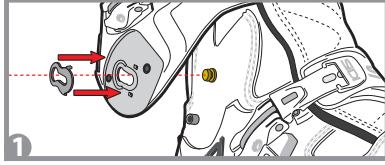
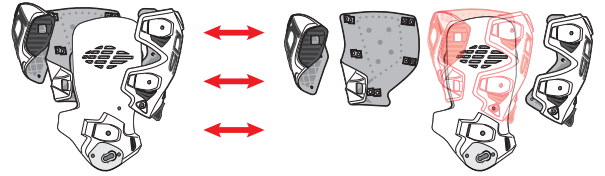




HOW TO REPLACE THE BOOT LEG UPPER
COME SOSTITUIRE IL GAMBALE



SRS DOVETAIL SOLE SRS
SOLE REPLACEMENT SYSTEM
COMPATIBLE with

CLICK SRS SOLE

ENDURO CLICK SRS SOLE

ATTENTION

NOTE: replace the sole
before the contoured part wears down to the screws

CROSSFIRE 3 CROSSFIRE 3 SRS



Sidi No: **25 - RSUCROSS**
Darbi No: **SIDISOLE**
STANDARD MX SOLE

· 39/41 - 42/44 - 45/47 - 48/51 - 52/52



CROSSFIRE 3



Sidi No: **156 - RSUSRSCLICK**
Darbi No: **SRSSOLECF3**
CLICK SRS SOLE

· 40/41 - 42/43 - 44/45 - 46/47



CROSSFIRE 3 SRS

Sidi No: **157 - RXSRS4**
Darbi No: **CF3SCREW**
FAST RELEASE SCREWS
for SRS DOVETAIL SOLE - 4 pcs



Sidi No: **284 - RSUENDCLICK**
Darbi No: **CF3TRAILSOLE**
ENDURO CLICK SRS SOLE

· 40/41 - 42/43 - 44/45 - 46/47

